



EMERSON EXCHANGE 2025

# ACCELERATING INNOVATION



ACCELERATING  
INNOVATION

# **Cross-platform Implementation of IP21: Making Process Data Accessible**

*Session ID: 5-1327*

## Disclaimer

The information and/or opinions expressed in this presentation are those of the authors and do not necessarily represent official policy or permission of Emerson or Emerson Exchange.

## Important Reminders

Photography and audio/video recording is not permitted in any session, or in the exhibition areas, without press credentials or written permission from Emerson or Emerson Exchange.

Inquiries should be directed to:  
**[EmersonExchange@Emerson.com](mailto:EmersonExchange@Emerson.com)**



## **Ashley Nighswander**

Digital Automation Engineer  
PureCycle Technologies



**Our resin can replace traditional resins with a fully circular solution.**



**DENVER,  
PENNSYLVANIA**

**PORT OF ANTWERP,  
BELGIUM**

**GLOBAL EXPANSION:  
SCALING THE FUTURE**



#1

**IRONTON,  
OHIO**

**AUGUSTA,  
GEORGIA**

**DURHAM,  
NORTH CAROLINA**

**CENTRAL JAPAN**

 Purification

 PreP Facilities

 Research & Development

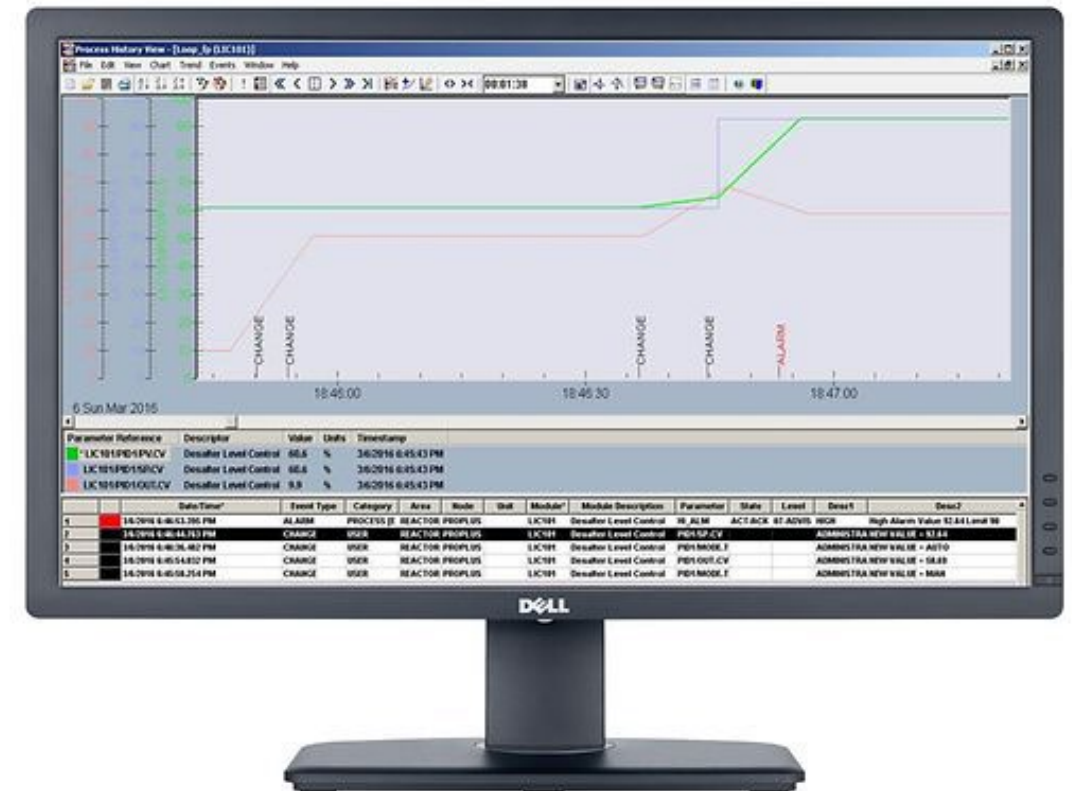
 HOA

# User Case Study

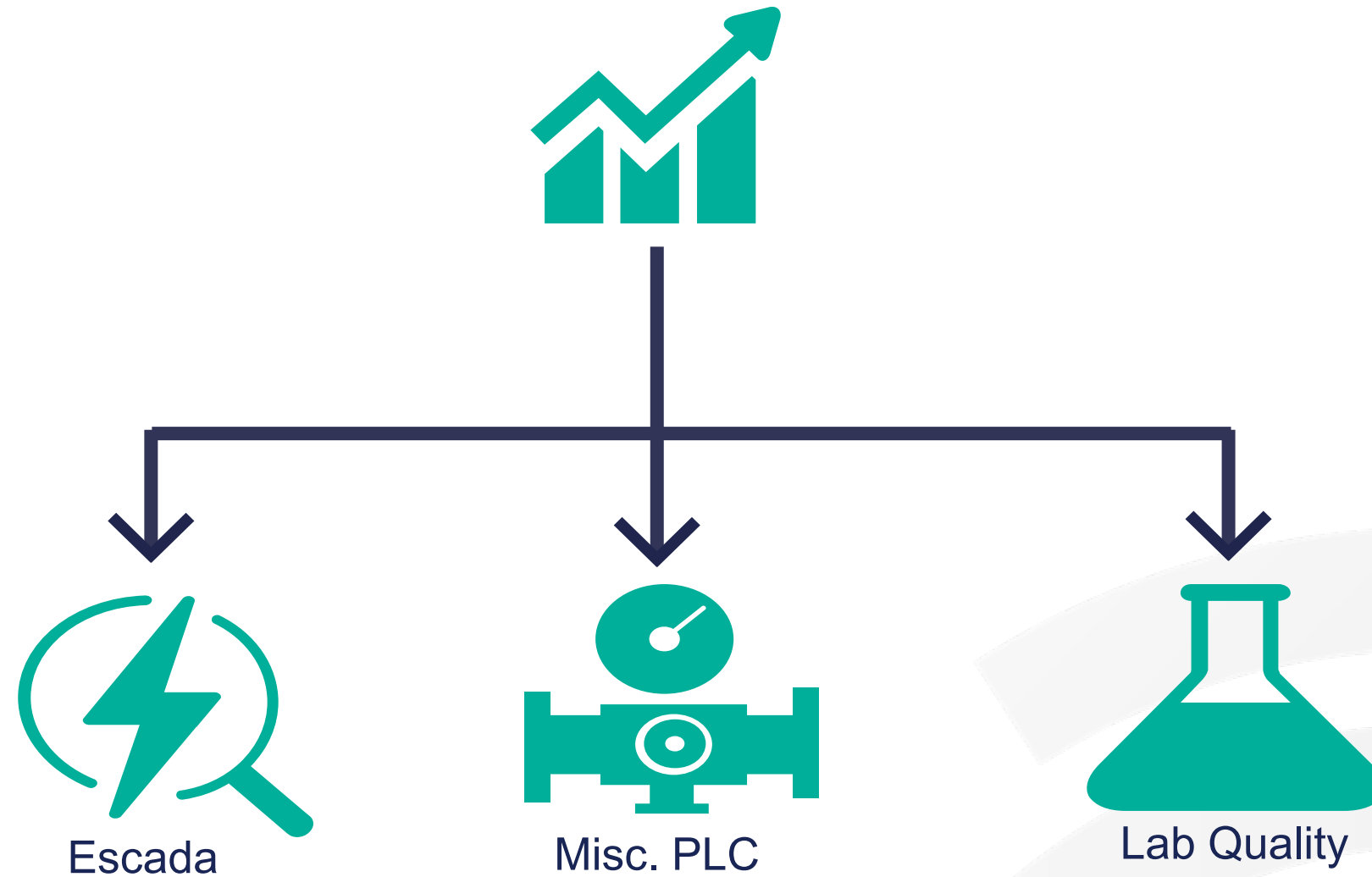
*How can we make process historian data easily accessible?*

# DeltaV Continuous Historian

- DeltaV DCS
  - Graphics
  - AMS
  - Continuous Historian
- Security Concerns around Remote Access to Historian



# Additional Data Sources



# The Solution

*Implementation of Aspen Info.Plus21*

# Aspen InfoPlus.21

- Real-time In Memory Database
- Additional Companion Applications
  - A1PE (Process Explorer)
  - SQLPlus
  - Aspen Calc

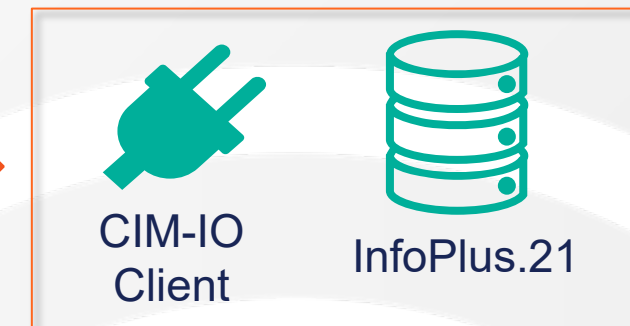
## Data Source



## CIM-IO Server



## Historian Server

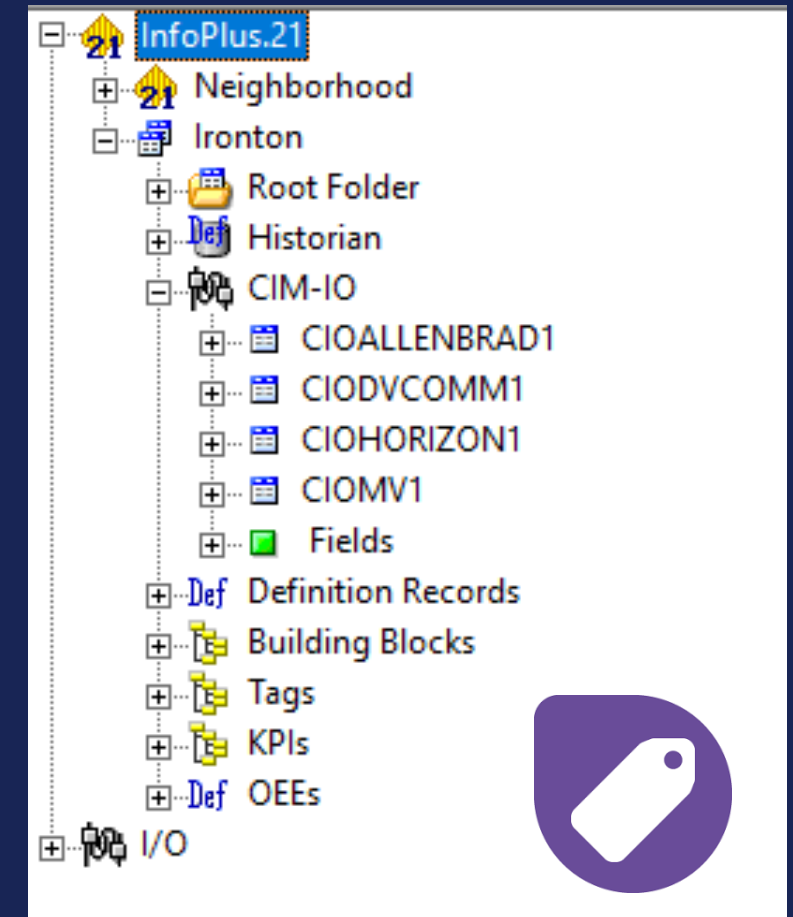


# Implementation

- Install and Admin Support

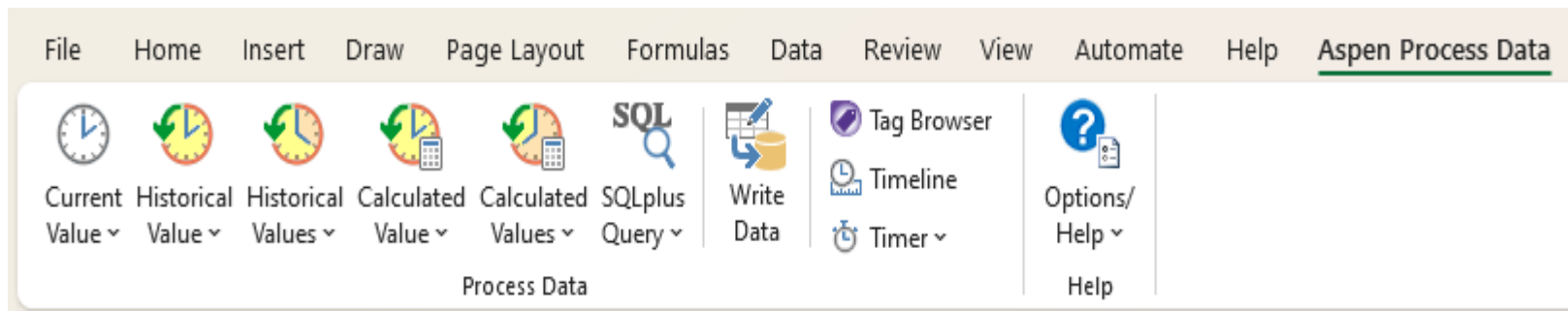


- IT/OT Cooperation
- Different Data Sources require Unique Approaches
  - OPC-DA vs OPC-UA
  - SQLPlus Scripting



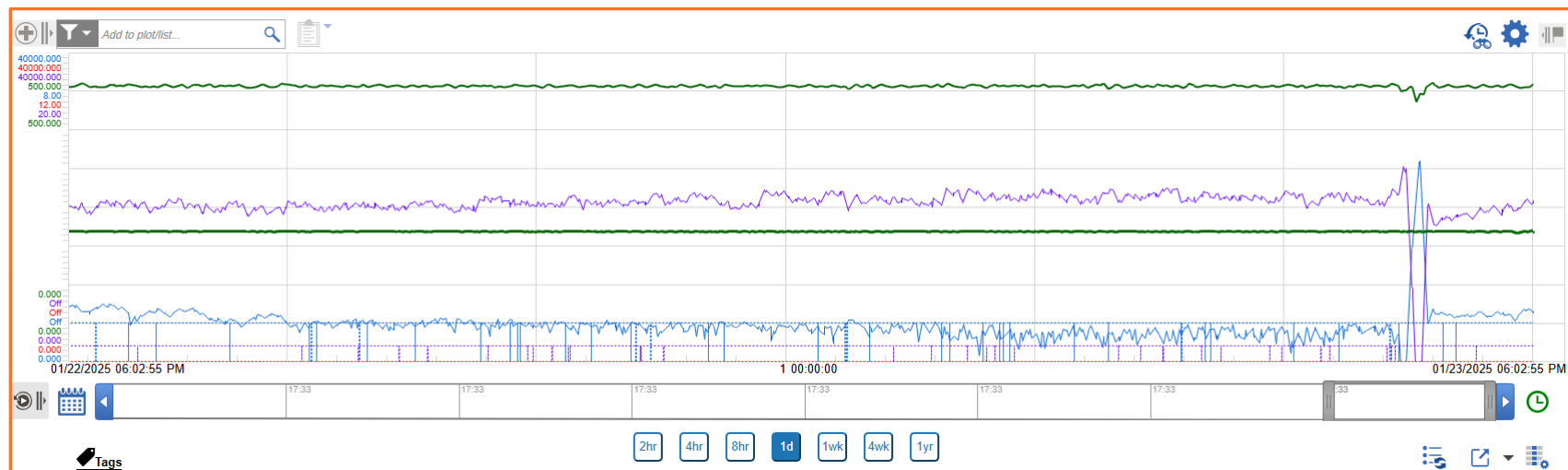
# Lab Quality Data

- Excel Add-in
- SQLPlus Script
  - Identify Changes
  - Historize Values



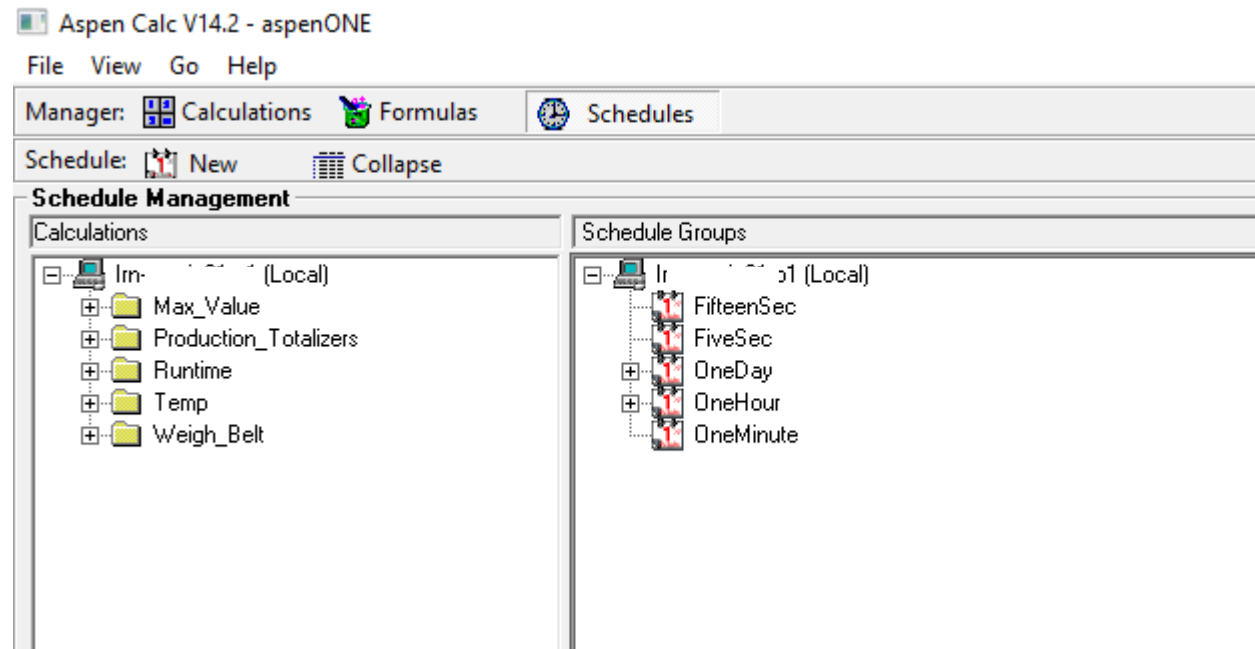
# A1PE

- Trending Tool
  - Desktop vs Web Client
- Primary End-user Application
- Graphics and Analytics Capabilities



# Aspen Calc

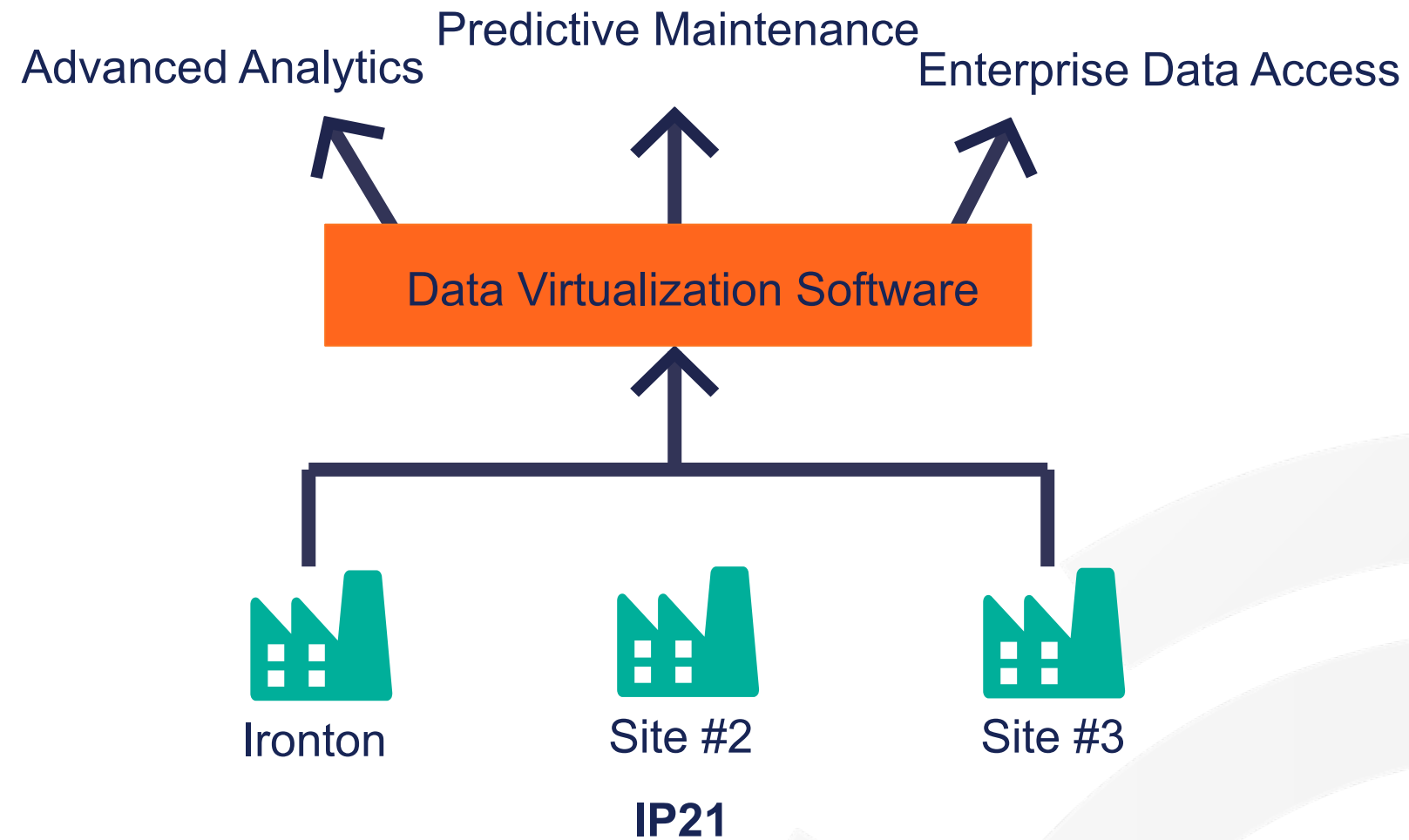
- Scheduling Tool for Calculations
- Primary Use-case
  - Equipment Runtimes



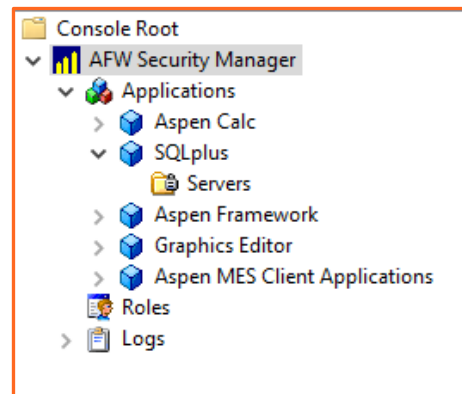
# The Future

*Scaling Capabilities as PCT Grows*

# Integration of New Sites



# What's Next?



Roles Based  
Security



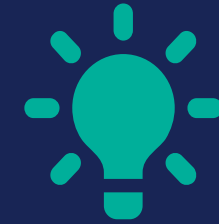
A1PE  
Graphics

SQLPlus  
Reporting



# Conclusions

- 75 end-users have access to 4700 records and growing
- Secure and Accessible Data
- Efficient Analytics Leads to Process Improvements





EMERSON EXCHANGE 2025

ACCELERATING  
INNOVATION

# Thank You

## Find More Information

<https://www.purecycle.com>

<https://www.aspentech.com/en/products/msc/aspen-infoplus21>

## Contacts

Ashley Nighswander

Phone: 832.858.3878

Email: [Anighswander@purecycle.com](mailto:Anighswander@purecycle.com)