



EMERSON EXCHANGE 2025

ACCELERATING INNOVATION



ACCELERATING
INNOVATION

Leverage AI & Edge to Exceed Production Targets

May 2025 [5-1265]

Disclaimer

The information and/or opinions expressed in this presentation are those of the authors and do not necessarily represent official policy or permission of Emerson or Emerson Exchange.

Important Reminders

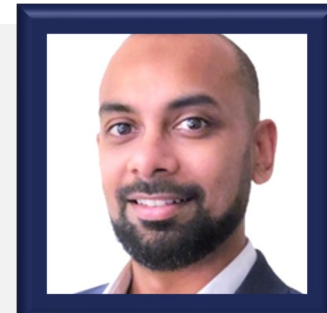
Photography and audio/video recording is not permitted in any session, or in the exhibition areas, without press credentials or written permission from Emerson or Emerson Exchange.

Inquiries should be directed to:
EmersonExchange@Emerson.com



CAMILO MEJIA

Chief Executive Officer | Enovate Ai



ADIN NAND

Director, Business Development | Emerson



CODY EDGERTON

Manager, Strategic Accounts – Americas | Emerson



Agenda

CAMILO MEJIA | ADIN NAND

CODY EDGERTON | CAMILO MEJIA

CAMILO MEJIA

ADIN NAND

Vision: Artificial Intelligence for Offshore Oil & Gas

Technology: Integrated SaaS Experience with AI & Edge

Results: Exceeding Production Targets

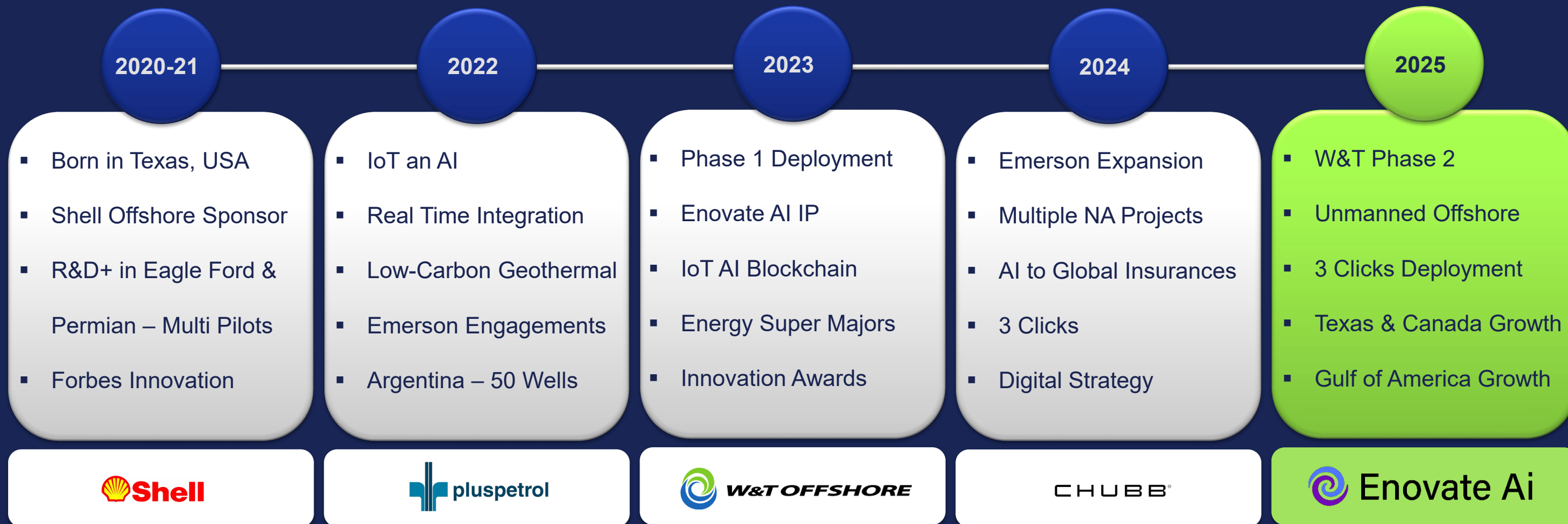
Future: Continued Partnership & Defining the Future



**Empowering Oil, Gas, and New Energy Companies
with Autonomous AI Solutions for Unmatched
Efficiency, Productivity, and Sustainability.**

*Leveraging Real Time Integrated Engineering and Advanced
Analytics to Address Complex Operational Challenges*

History of Enovate Ai

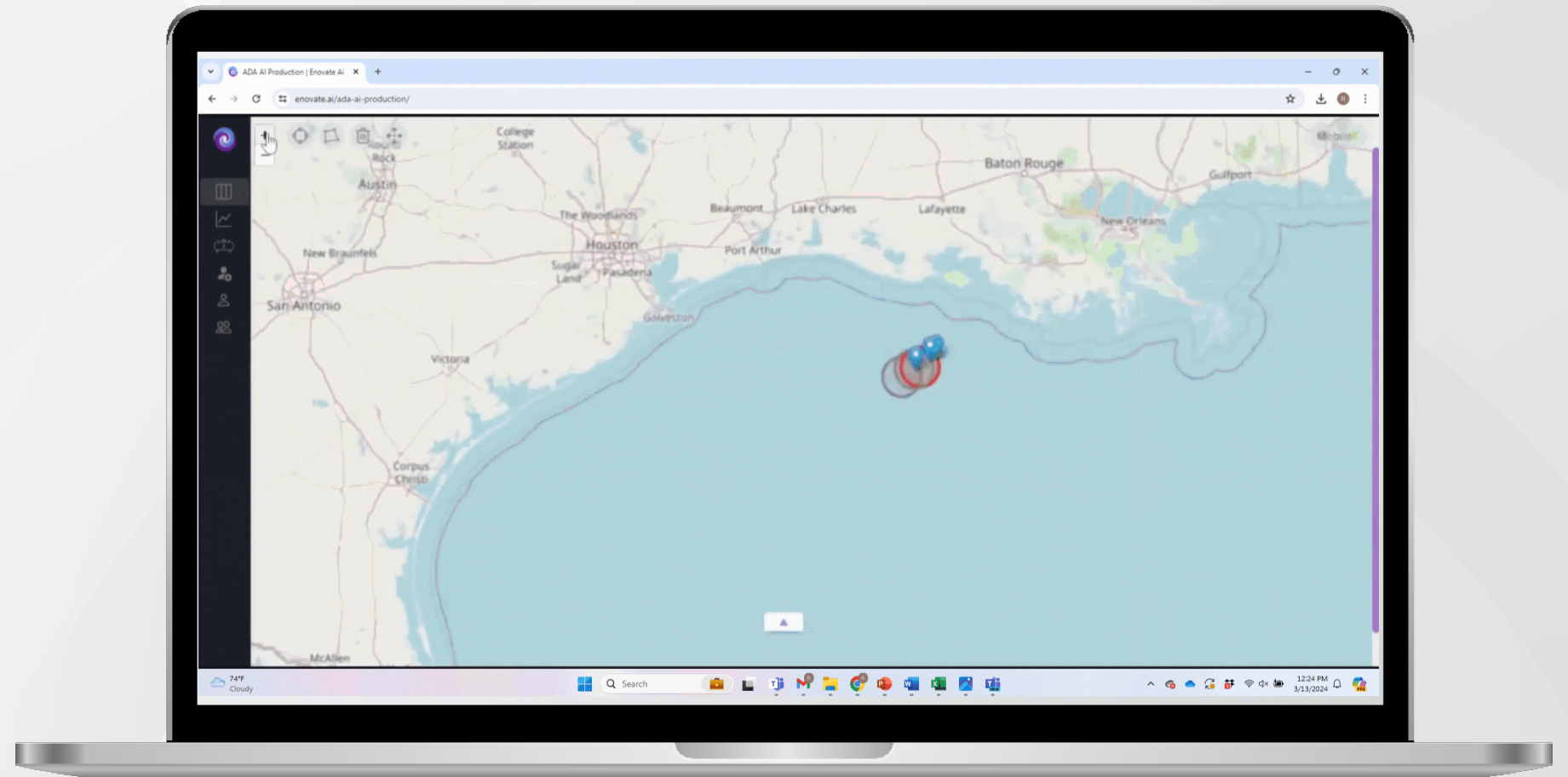


Artificial Intelligence for Offshore Oil & Gas

W&T Offshore Case Study

W&T Offshore Future Vision

Unmanned Offshore Operations



W&T Tech Transformation Timeline



W&T OFFSHORE

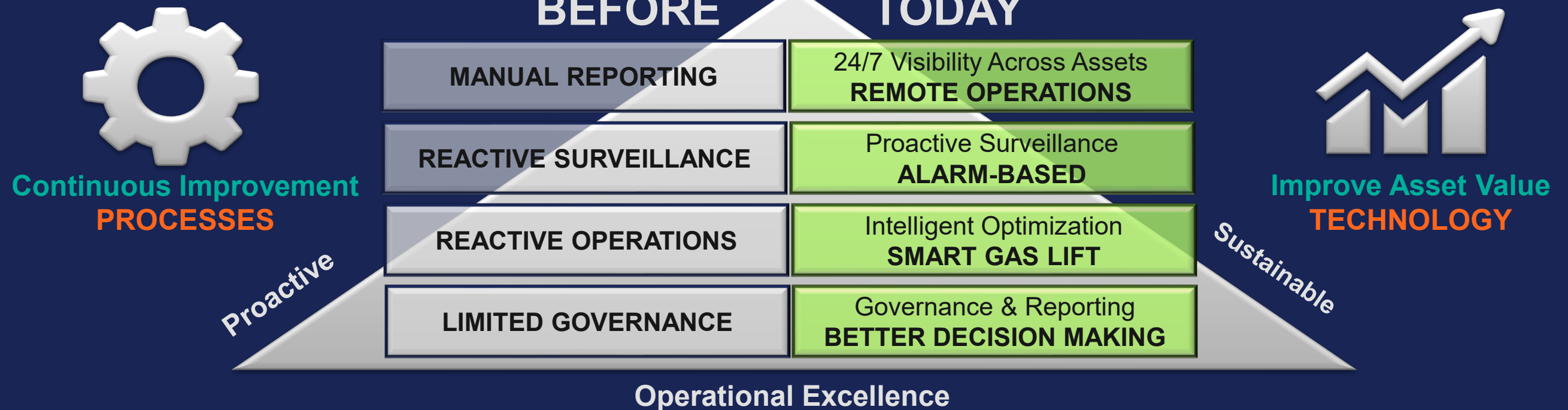


Operational Vision

- + Higher Production
- Lower Operational Cost



Enhanced Safety
PEOPLE



Targeted Goals

OPTIMIZE PRODUCTION

Reduce downtime & identify opportunities
More focus on production optimization

REMOTE VISIBILITY

Mitigate failures, increase safety & increase return
Prioritize downtime issues by incremental value

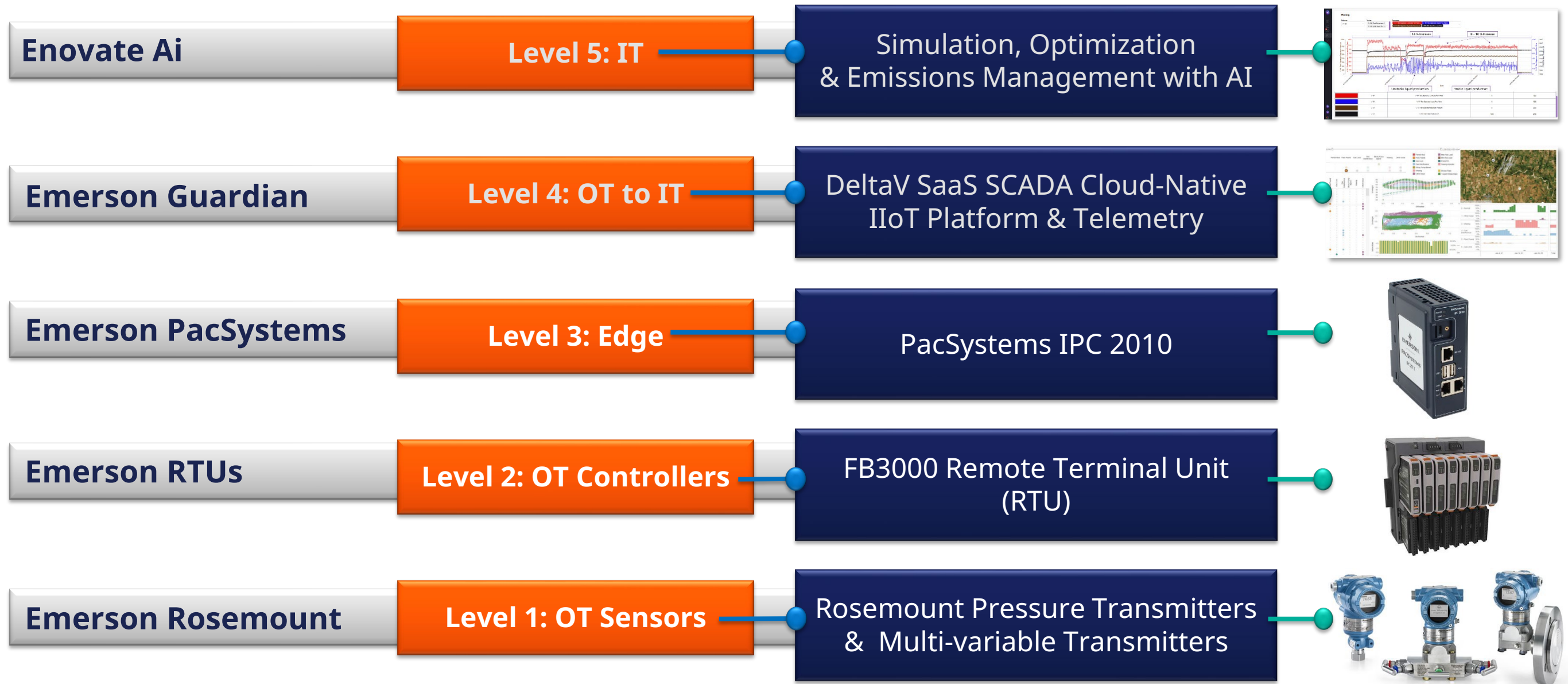
UNMAN PLATFORMS

Increase safety for people & environment
Harness tech to relieve skilled labor shortage

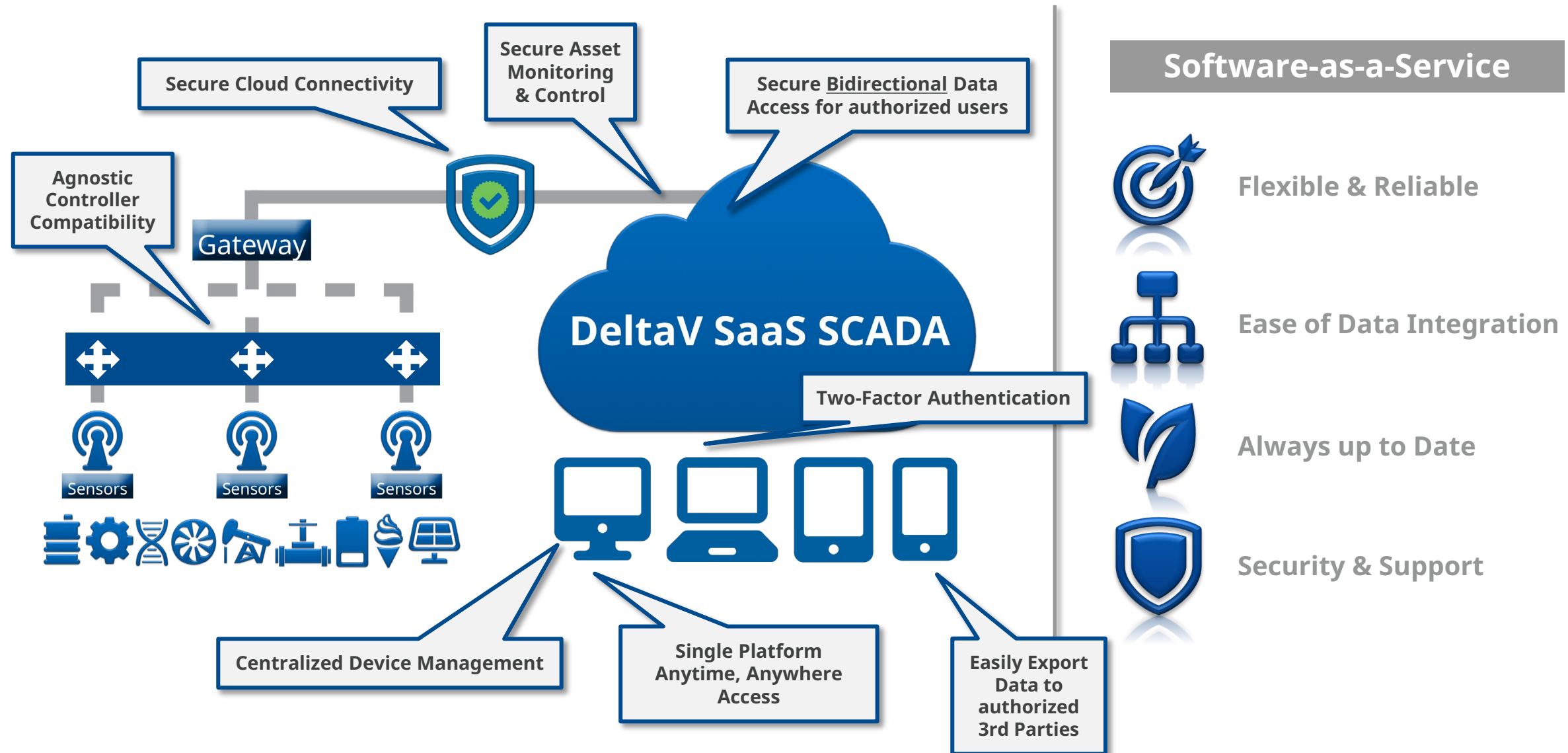
Integrated SaaS Experience with AI & Edge

Seamlessly putting it all together

Emerson & Enovate Ai Tech Stack



DeltaV SaaS SCADA Architecture



DeltaV SaaS SCADA Features

Vivid data trending, default & custom reporting

Mobile app iPhone & Android

Alarm management with auto call-out alarms

3rd party access & data exchange ingress/egress

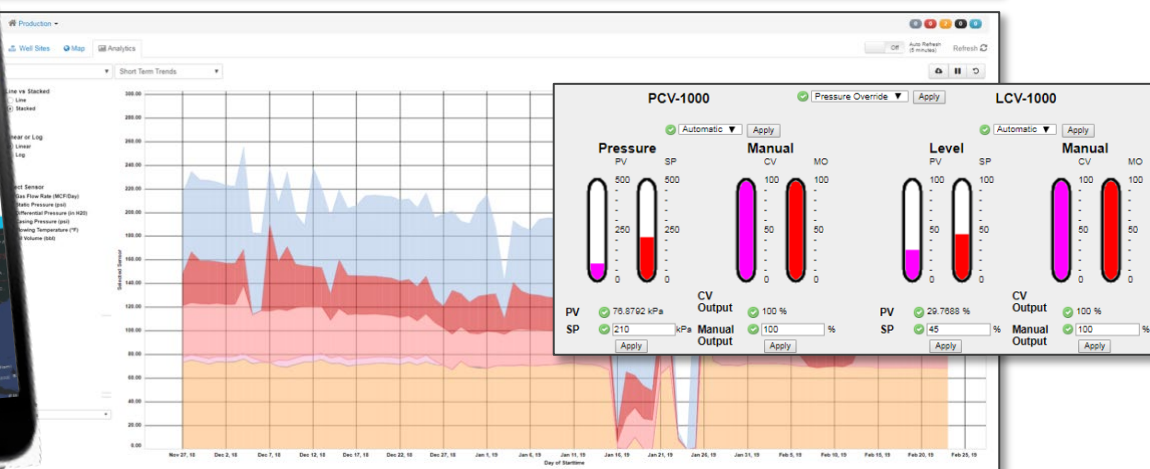
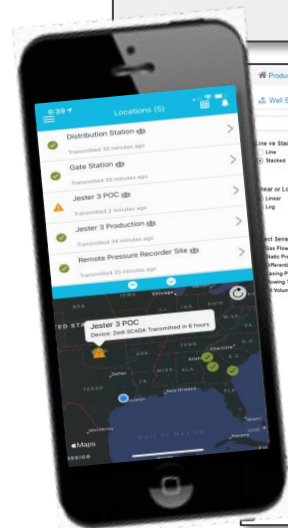
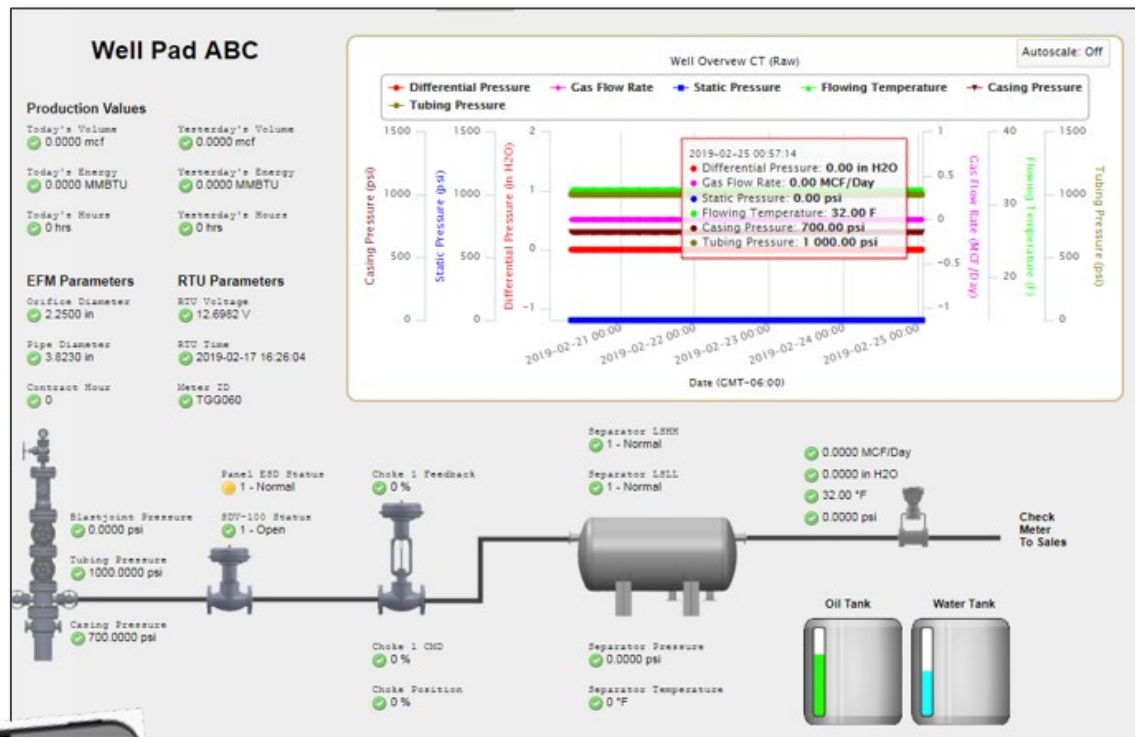
Continuous polling & communications

Easily manage permissions & workflows

Two-factor authentication (2FA) security

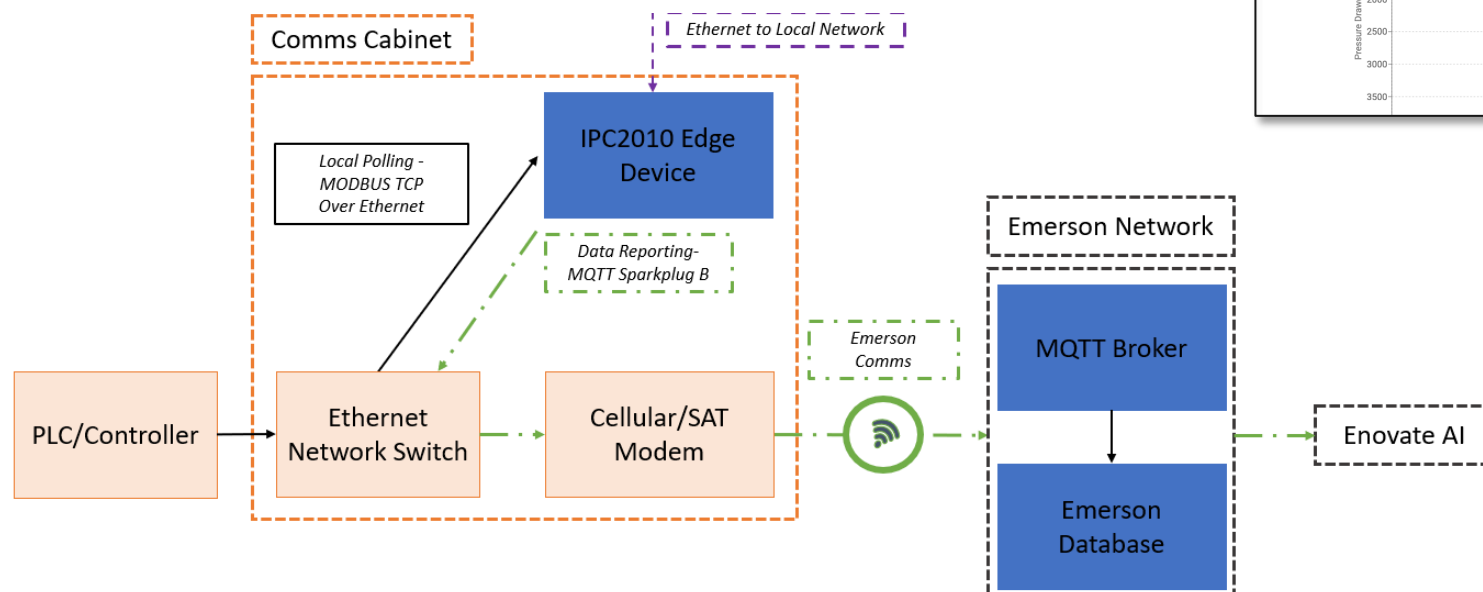
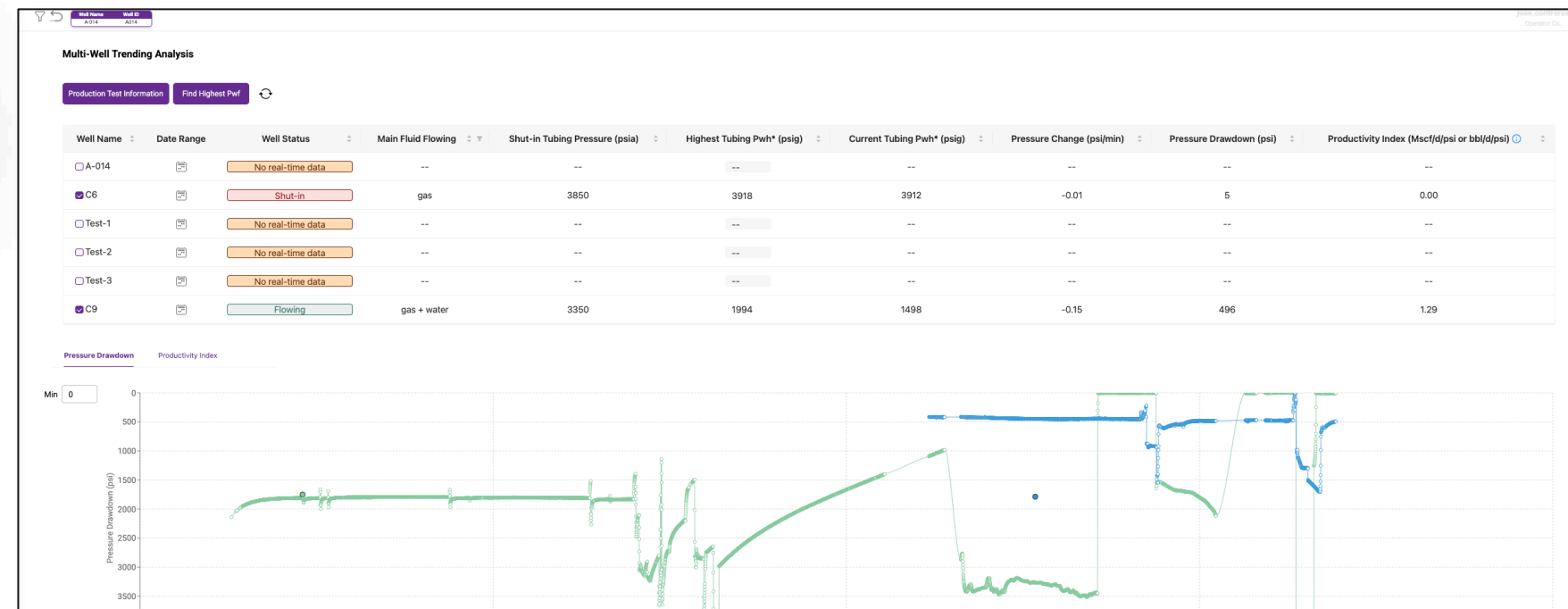
Controller and Hardware Device Agnostic

Communication System Agnostic

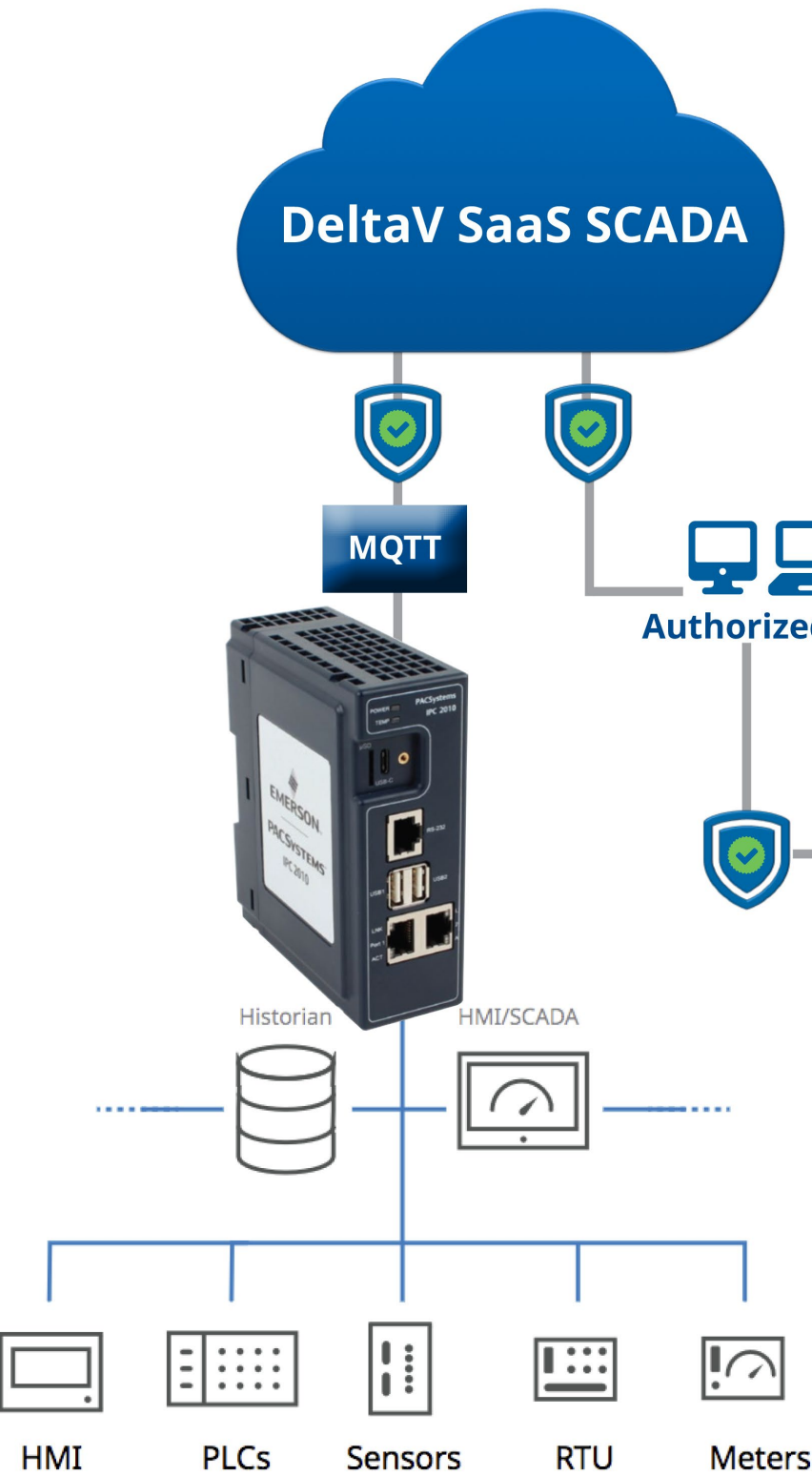


W&T Phase 2: ALABAMA

ADVANCED EDGE AI PRODUCTION SURVEILLANCE
The most advanced AI project in Offshore O&G today



- 30+ Year Of Data
- 3000 Tags
- 20 High Producing Wells
- High Gas Producers



Find focus in your operations with targeted data to stop distractions, but still have access to all your data when you need it

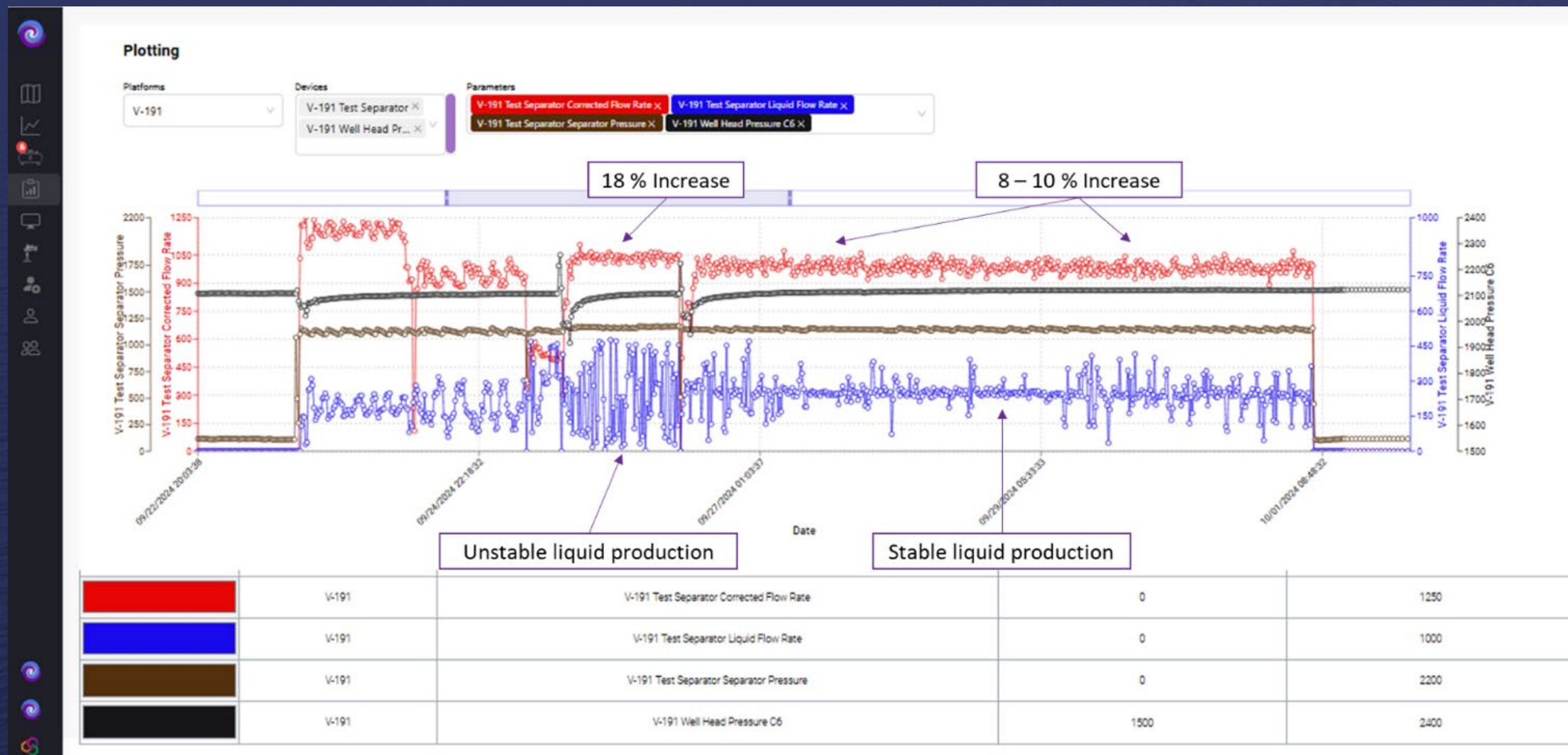
Boundless Automation ON-DEMAND



Exceed Production Targets

Business Results and Returns Achieved

Exceeding Targets with Realtime AI-based Reporting



Continued Partnership & Defining the Future

The future is bright

Realtime Emissions Reporting & Reduction Verification

Integrated large scale
with high-resolution real-time quantification

**Sendero ESG
Crossroads
Emerson**

Sensor placement



Kuva

Non-thermal
camera
large scale
quantification

**Emerson's
DeltaV SaaS SCADA**

Cloud-native IIoT platform
delivers secure
centralization and automatic
updates with full support

Enovate Ai

Production
management

Emissions
management

Production
Optimization

Emissions
Reporting

**LDAR
Enovate Ai
Carbon**

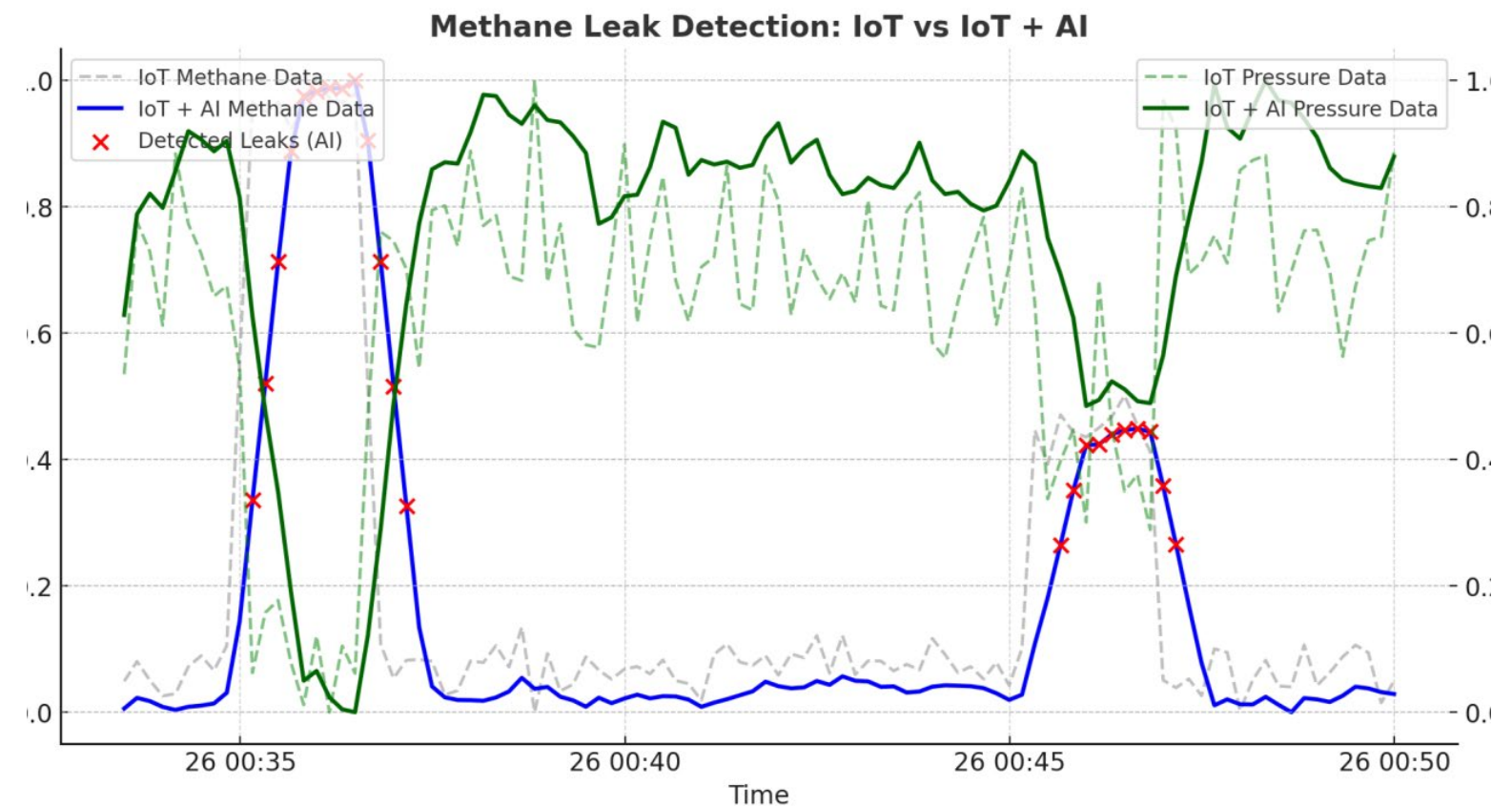
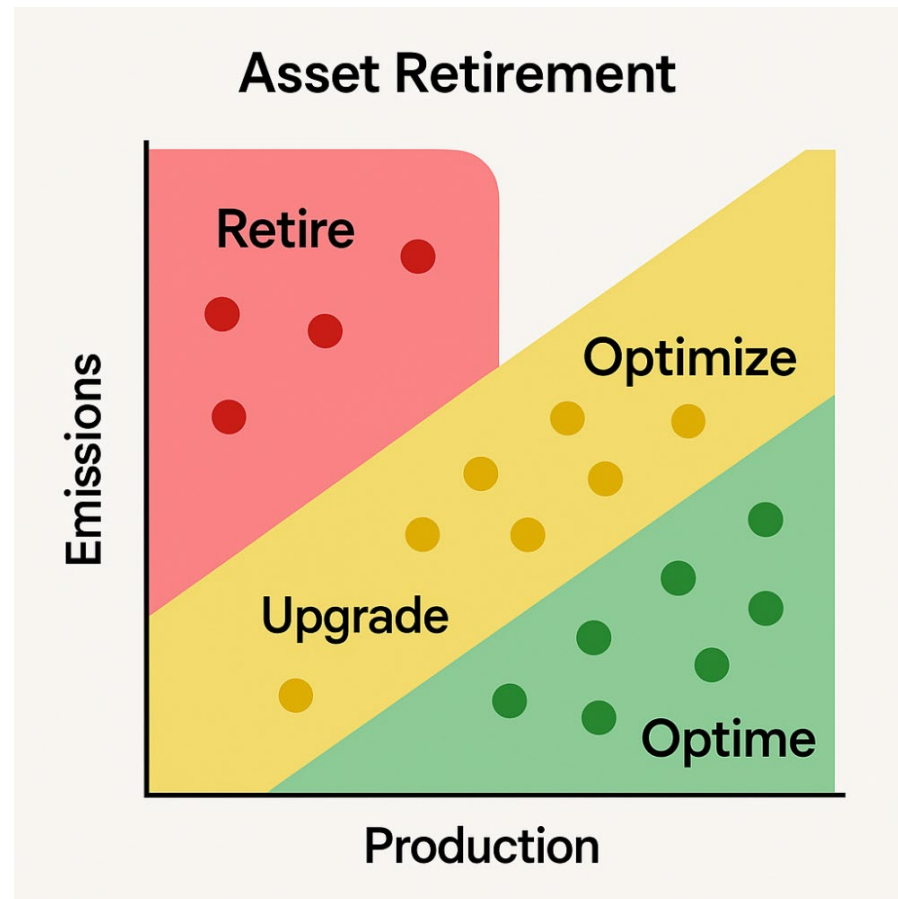
Intensity
per barrel
Emissions
reduction

**Insurers
underwriting**

**Carbon
&
financial
markets**

Simplifying Complexity

$$E(x,y,t) = \alpha \cdot L(x,y,t) + \beta \cdot \Phi(x,y,t) + \epsilon(x,y,t)$$



Apr 23, 2025 11:53 AM Eastern Daylight Time

Last Mile Production, LLC Achieves 300% Production Growth and 70% Emissions Reduction with Enovate AI

Enovate Ai & Emerson Roadmap

1

Initial Customers

Technology Integration

Production projects

- Oil and Gas
- Geothermal
- CCS

2

Technology Strategy

Implementation Strategy
Expansion

3 New Markets:

- Offshore Operations
- Shale Oil & Gas
- Closed-Loop Artificial Lift Automation

3

Deployment at Scale

New Standard AI SCADA

Integration for Success

R&D Road Map

AI Autonomy deployment

4

Targeted Growth

Intelligent, real-time
energy operations

30% Market Share

\$8B USD Available
Market Next 2 Years

The Big Picture

Emerson Reducing Emissions In The US – Enhancing Overseas Manufacturing

Achieve peak performance with Emerson and Enovate Ai

1. **Automate** streamlined operations with advanced control systems and intelligent SCADA
2. **Optime** Hybrid AI/ML engineering systems for real-time optimization
3. **Decarbonize** enhanced carbon management for capitalization and secure environmental reporting

UK House of Commons



Exhibit: SCADA Systems

Find More Information

[Emerson.com/DeltaVSaaS](https://emerson.com/DeltaVSaaS)

[Enovate.ai](https://enovate.ai)

Contacts

Adin.Nand@Emerson.com

Cody.Edgerton@Emerson.com

Camilo.Mejia@Enovate.ai



EMERSON EXCHANGE 2025

ACCELERATING
INNOVATION

Thank You