



Knowledge Base Articles

Process History View Displays Incorrect Date Format

Article ID: AP-0900-0017
Publish Date: 23 Mar 2021
Article Status: Approved
Article Type: General Product Technical Information
Required Action: As Needed

Recent Article Revision History:

Revision/Publish	Description of Revision
23 Mar 2021	Added DeltaV v13.3.x in the affected products. Updated document format. (See end of article for a complete revision history listing.)

Affected Products:

Product Line	Category	Device	Version
DeltaV	Workstation Software	VE2145PHV History View (PHV)	v9.3.x, v10.3.x, v11.3.x, v12.3.x, v13.3.x

1 Introduction

This Knowledge Base Article, **AP-0900-00017**, describes an issue wherein the day and month values of the Date/Time column in DeltaV Process History View (PHV) are shown incorrectly. This affects only DeltaV English language releases.

2 Details of the Issue

In DeltaV v9.3.x, the issue occurs when these four conditions exist:

1. Windows Regional Setting is NOT set to English (United States)
2. DeltaV locale registry is 409 (hexadecimal) or 1033 (decimal)
3. The day is the first entry in the date format of the Windows Regional Settings (i.e., dd/MM/yy or d/M/yyyy)
4. The day is from the 1st day of the month to the 12th day of the month.

In DeltaV v10.3.x and later, the issue occurs when these four conditions exist:

1. Windows Regional Setting is NOT set to English (United States)
2. DeltaV locale registry is NOT 409 (hexadecimal) or 1033 (decimal)
3. The day is the first entry in the date format of the Windows Regional Settings (i.e., dd/MM/yy or d/M/yyyy)
4. The day is from the 1st day of the month to the 12th day of the month.

These conditions will cause PHV to always use the date format of 'MM/dd/yyyy'. For example, for a Windows Regional Setting of English (United Kingdom) and date format of dd/MM/yyyy, PHV will display '01/06/2009' instead of '06/01/2009' for events with a timestamp of Jan 6, 2009 (see **Figure 2-1**).

However, if the Windows Regional Setting used is English (United States), all the date formats, including dd/MM/yyyy and d/M/yy, will be shown correctly in Process History View (see **Figure 2-2**).

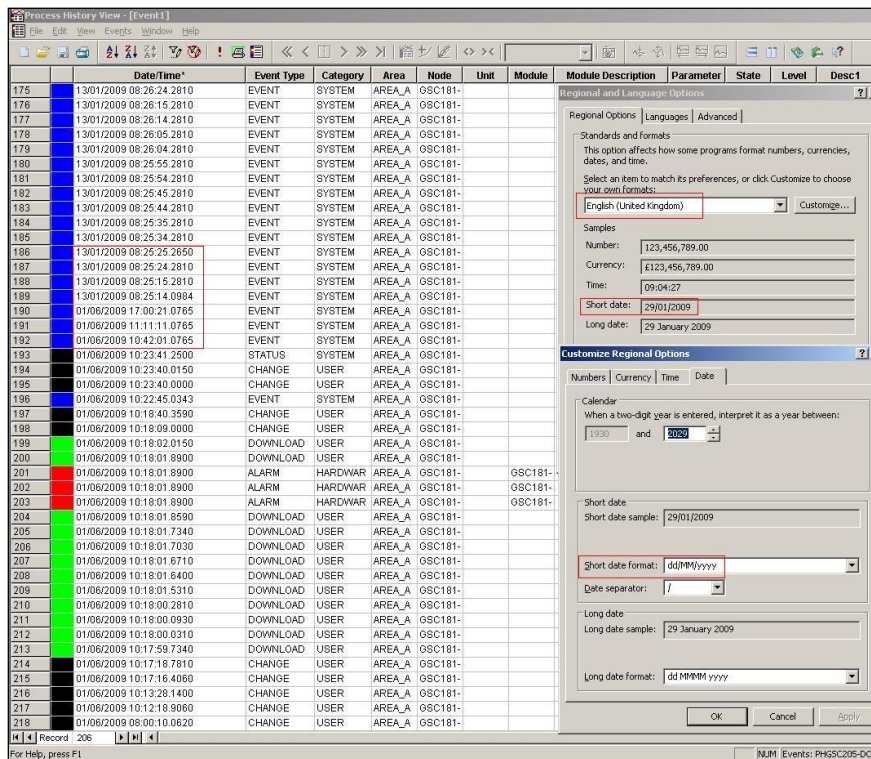


Figure 2-1 – Process History View shows incorrect date format when using English (United Kingdom) with a default short date format of dd/MM/yyyy

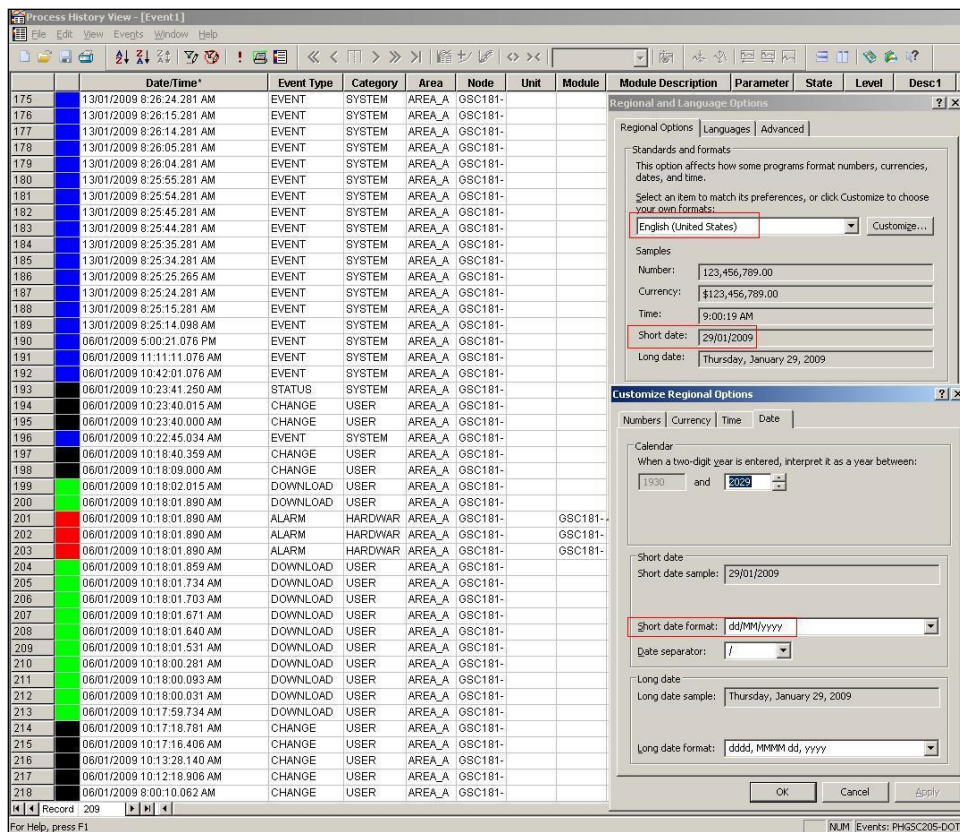


Figure 2-2 – Correct date format of dd/MM/yyyy for Process History View when using English (United States)

3 Workaround

Important: Installing DeltaV English version will automatically set the locale registry to 409 (hexadecimal) or 1033 (decimal) regardless of the Windows Regional Setting. Modifying the locale registry to any other than the default value is not supported nor tested in DeltaV.

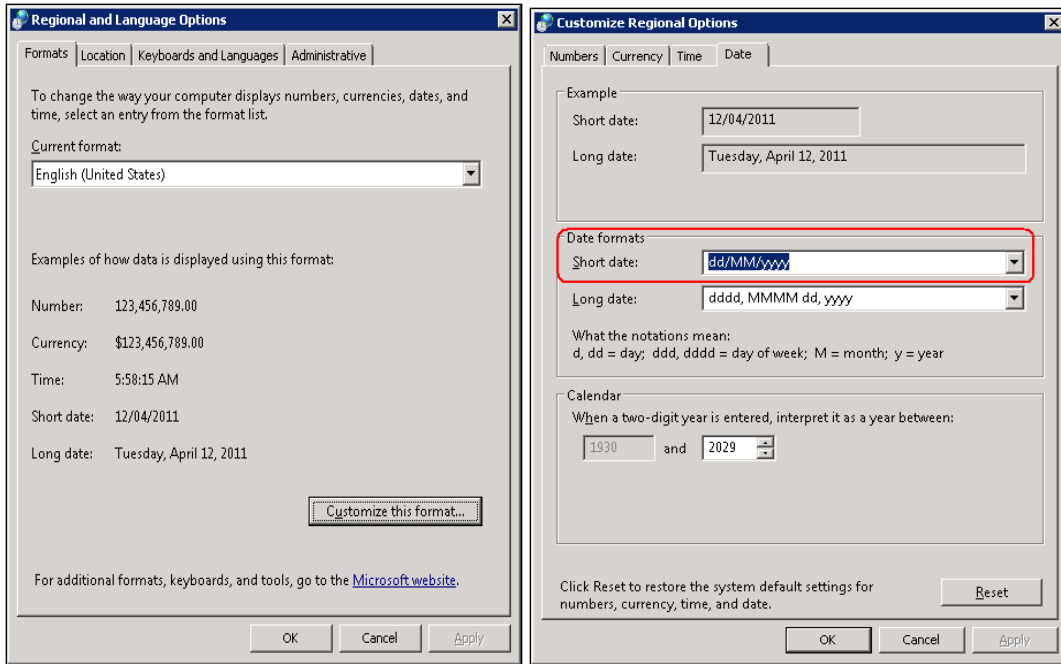
In addition, changing the Windows system locale (Language for non-Unicode programs) from “English (United States)” to another setting is NOT a supported functionality for the US English version of DeltaV. It is recommended that US English Regional Settings be used on a US English version of DeltaV. Non-English locales are supported only on non-English language releases of DeltaV, where the supported locales are specific only to the DeltaV language.

The applicable workarounds below consider whether or not the affected DeltaV system uses the **Batch History View (BHV)**, since changing the Windows Regional Setting also affects BHV, which may possibly lead to the issue detailed in KBA [AP-0900-0014: Date Format of Batch History View Does Not Match the Windows Regional Setting Date Format](#).

Apply the workaround that matches your system setup:

For DeltaV v9.3.x systems with or without BHV, and v10.3.x and later versions with BHV

1. Open 'Regional and Language Options' from the Control Panel.
2. The Windows Regional Setting should be set as English (United States) however, the 'Location' can be modified to the desired world location, i.e., United Kingdom.
3. Customize the short date format (see **Figure 3-1**) by typing the required format, i.e. dd/MM/yy or dd-MM-yyyy. Manually input the short date format if the required format is not available from the drop down menu.



Windows Server 2008 Operating System

Figure 3-1 – Customizing Regional Options

4. Modify the other fields as necessary, such as the Long date, time, currency, decimal separator, digit separator, etc. Manually enter the value if the required format is not available from the drop down menu.
5. Select OK on both tabs to save the changes.
6. Set the DeltaV locale registry to 409 (hexadecimal) or 1033 (decimal) using Registry Editor (**Figure 3-2**).

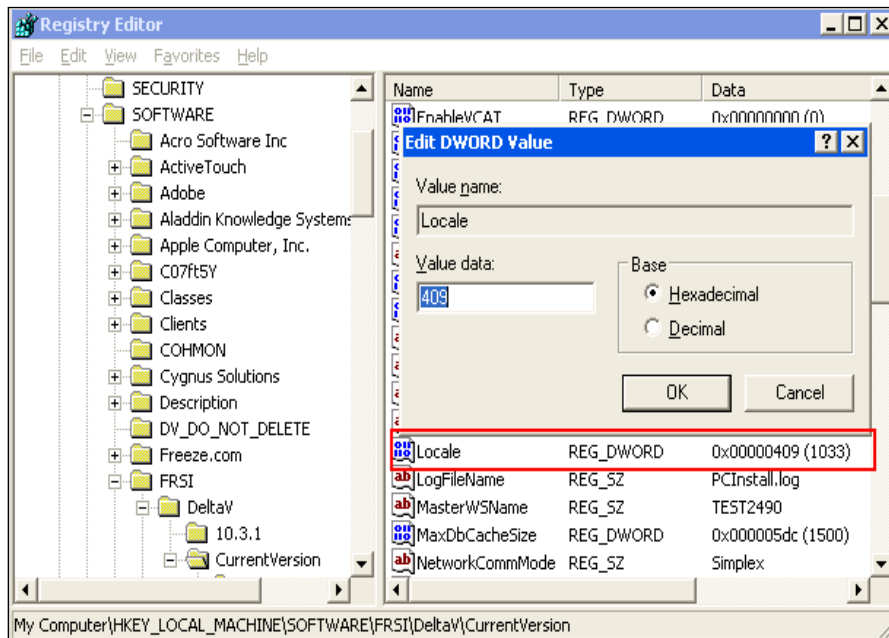


Figure 3-2 – Setting the DeltaV locale registry using Registry Editor

7. Re-launch the PHV application. Verify that the date format has been corrected (**Figure 3-3**).

	Date/Time*	Event Type	Category	Area	Node	Unit	Module	Module Description	Parameter	State
1	12/04/2011 5:55:51.865 AM	CHANGE	USER	AREA_A	GSC-205					REMOTE
2	12/04/2011 5:55:51.708 AM	CHANGE	USER	AREA_A	GSC-205					REMOTE
3	12/04/2011 5:55:50.873 AM	CHANGE	USER	AREA_A	GSC-205					LOGON
4	12/04/2011 5:24:02.958 AM	EVENT	SYSTEM	EXTERIO	GSC-205		UM_COL	Unit Module	DUMP_ALM	DISABLE
5	12/04/2011 5:24:02.733 AM	EVENT	PROCESS	EXTERIO	GSC-205		UM_COL	Unit Module	DUMP/BST	IDLE
6	12/04/2011 5:24:02.696 AM	EVENT	PROCESS	EXTERIO	GSC-205		UM_COL	Unit Module	DUMP/BST	STOPPE
7	12/04/2011 5:24:01.172 AM	EVENT	PROCESS	EXTERIO	GSC-205		UM_COL	Unit Module	DUMP/BST	STOPPIN
8	12/04/2011 5:24:01.049 AM	EVENT	PROCESS	EXTERIO	GSC-205		UM_COL	Unit Module	DUMP/BST	RUNNIN
9	12/04/2011 5:23:52.705 AM	EVENT	SYSTEM	EXTERIO	GSC-205		UM_COL	Unit Module	DUMP_ALM	INACTIA
10	12/04/2011 5:23:51.185 AM	EVENT	SYSTEM	EXTERIO	GSC-205		UM_COL	Unit Module	FILL_ALM	DISABLE
11	12/04/2011 5:23:51.002 AM	EVENT	PROCESS	EXTERIO	GSC-205		UM_COL	Unit Module	FILLUBSTAT	IDLE
12	12/04/2011 5:23:50.705 AM	EVENT	PROCESS	EXTERIO	GSC-205		UM_COL	Unit Module	FILLUBSTAT	STOPPE
13	12/04/2011 5:23:49.043 AM	EVENT	PROCESS	EXTERIO	GSC-205		UM_COL	Unit Module	FILLUBSTAT	STOPPIN
14	12/04/2011 5:23:46.013 AM	EVENT	PROCESS	EXTERIO	GSC-205		UM_COL	Unit Module	FILLUBSTAT	RUNNIN
15	12/04/2011 5:23:32.713 AM	EVENT	SYSTEM	EXTERIO	GSC-205		UM_COL	Unit Module	FILL_ALM	INACTIA
16	12/04/2011 5:23:17.475 AM	EVENT	SYSTEM	EXTERIO	GSC-205		UM_BLE	Unit Module	CHG_COL	DISABLE
17	12/04/2011 5:23:17.326 AM	EVENT	PROCESS	EXTERIO	GSC-205		UM_BLE	Unit Module	CHG_COL	IDLE
18	12/04/2011 5:23:17.273 AM	EVENT	PROCESS	EXTERIO	GSC-205		UM_BLE	Unit Module	CHG_COL	STOPPE
19	12/04/2011 5:23:16.115 AM	EVENT	PROCESS	EXTERIO	GSC-205		UM_BLE	Unit Module	CHG_COL	STOPPIN
20	12/04/2011 5:23:16.020 AM	EVENT	PROCESS	EXTERIO	GSC-205		UM_BLE	Unit Module	CHG_COL	RUNNIN
21	12/04/2011 5:23:11.273 AM	EVENT	SYSTEM	EXTERIO	GSC-205		UM_BLE	Unit Module	CHG_COL	INACTIA
22	12/04/2011 5:23:09.533 AM	EVENT	SYSTEM	EXTERIO	GSC-205		UM_BLE	Unit Module	CHG_BASE	DISABLE
23	12/04/2011 5:23:09.386 AM	EVENT	PROCESS	EXTERIO	GSC-205		UM_BLE	Unit Module	CHG_BASE	IDLE
24	12/04/2011 5:23:09.283 AM	EVENT	PROCESS	EXTERIO	GSC-205		UM_BLE	Unit Module	CHG_BASE	STOPPE
25	12/04/2011 5:23:07.383 AM	EVENT	PROCESS	EXTERIO	GSC-205		UM_BLE	Unit Module	CHG_BASE	STOPPIN
26	12/04/2011 5:23:01.069 AM	EVENT	PROCESS	EXTERIO	GSC-205		UM_BLE	Unit Module	CHG_BASE	RUNNIN
27	12/04/2011 5:22:58.283 AM	EVENT	SYSTEM	EXTERIO	GSC-205		UM_BLE	Unit Module	CHG_BASE	INACTIA
28	12/04/2011 5:22:48.475 AM	EVENT	SYSTEM	EXTERIO	GSC-205		UM_BLE	Unit Module	CHG_COL	DISABLE
29	12/04/2011 5:22:48.287 AM	EVENT	PROCESS	EXTERIO	GSC-205		UM_BLE	Unit Module	CHG_COL	IDLE
30	12/04/2011 5:22:48.243 AM	EVENT	PROCESS	EXTERIO	GSC-205		UM_BLE	Unit Module	CHG_COL	STOPPE
31	12/04/2011 5:22:46.290 AM	EVENT	PROCESS	EXTERIO	GSC-205		UM_BLE	Unit Module	CHG_COL	STOPPIN
32	12/04/2011 5:22:46.069 AM	EVENT	PROCESS	EXTERIO	GSC-205		UM_BLE	Unit Module	CHG_COL	RUNNIN
33	12/04/2011 5:22:37.253 AM	EVENT	SYSTEM	EXTERIO	GSC-205		UM_BLE	Unit Module	CHG_COL	INACTIA
34	12/04/2011 5:22:35.484 AM	EVENT	SYSTEM	EXTERIO	GSC-205		UM_BLE	Unit Module	CHG_BASE	DISABLE
35	12/04/2011 5:22:35.318 AM	EVENT	PROCESS	EXTERIO	GSC-205		UM_BLE	Unit Module	CHG_BASE	IDLE
36	12/04/2011 5:22:35.253 AM	EVENT	PROCESS	EXTERIO	GSC-205		UM_BLE	Unit Module	CHG_BASE	STOPPE
37	12/04/2011 5:22:33.476 AM	EVENT	PROCESS	EXTERIO	GSC-205		UM_BLE	Unit Module	CHG_BASE	STOPPIN
38	12/04/2011 5:22:31.069 AM	EVENT	PROCESS	EXTERIO	GSC-205		UM_BLE	Unit Module	CHG_BASE	RUNNIN
39	12/04/2011 5:22:30.253 AM	EVENT	SYSTEM	EXTERIO	GSC-205		UM_BLE	Unit Module	CHG_BASE	INACTIA
40	12/04/2011 5:20:58.146 AM	DOWNLOAD	USER	AREA_A	GSC-205				GSC-205	UPDATE

Figure 3-3 – Correct date format of dd/MM/yy for Process History View when using English (United States)

For DeltaV v10.3.x and later versions without BHV:

Set the DeltaV Locale registry to 409 (hexadecimal) or 1033 (decimal) regardless of the Windows Regional Setting.

For DeltaV v12.3.x and later versions running on 64-bit OS

Same approach may be done as discussed in part B and C. However, registry changes should be done at HKLM\Software\Wow6432Node\FRS\DeltaV (Figure 3-4).

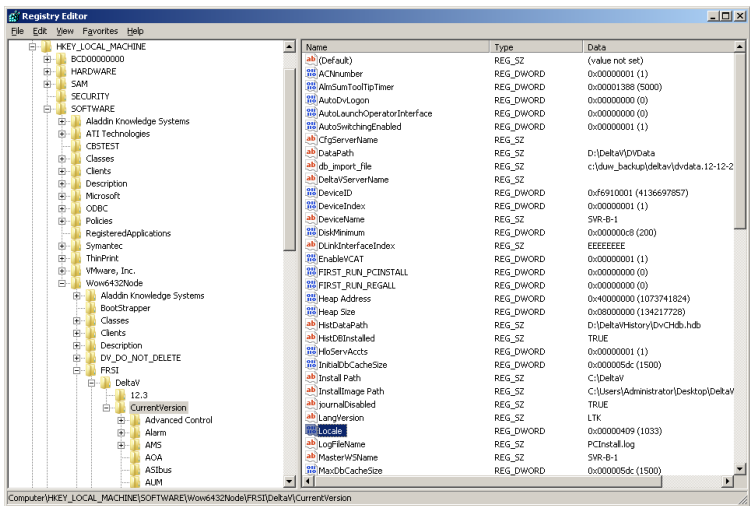


Figure 3-4 – Registry change at 64-bit OS

For users who prefer to follow other date formats aside from English (United States)

It is advisable to set the Current Format to the preferred format (i.e. English (United Kingdom), Italian, Spanish, German, Russian, etc.) and leave the System Locale to English (United States).

4 Resolution

Investigations will be conducted to allow both PHV and BHV to utilize whatever Windows Regional Setting is configured by the user in future DeltaV releases.

Contact Information

Services are delivered through our global services network. To contact your Emerson local service provider, click [Contact Us](#). To contact the Global Service Center, click [Technical Support](#).

Related products and services: [DeltaV DCS](#) | [Lifecycle Services](#)

Complete Article Revision History:

Revision/Publish	Description of Revision
23 Mar 2021	Added DeltaV v13.3.x in the affected products. Updated document format.
19 Mar 2015	Added a workaround for DeltaV v12.3.x systems
05 Aug 2014	Updated to state that supported functionality is for US English version only.
27 May 2013	Updated to include a note about the use of Non-English Locale
27 Apr 2011	Added instructions to customize English (United States) short date format
26 Jun 2009	Modified the Locale Registry Table for Non-English and English (Ireland) Windows Regional Settings
20 Feb 2009	Original release of article

©Emerson Automation Solutions 2009-2021. All rights reserved. For Emerson Automation Solutions trademarks and service marks, [click this link to see trademarks](#). All other marks are properties of their respective owners. The contents of this publication are presented for informational purposes only, and while diligent effort has been made to ensure their accuracy, they are not to be construed as warranties or guarantees, express or implied, regarding the products or services described herein or their use or applicability. All sales are governed by our terms and conditions, which are available on request. We reserve the right to modify or improve the design or specification of such products at any time without notice.

[View Emerson Products and Services: Click This Link](#)